

A PART OF SECTIONS 3,4,9, & 10, T.6N., R.2E., S.L.B. & M.
GREEN HILL COUNTRY ESTATES PHASE NO. 6

82

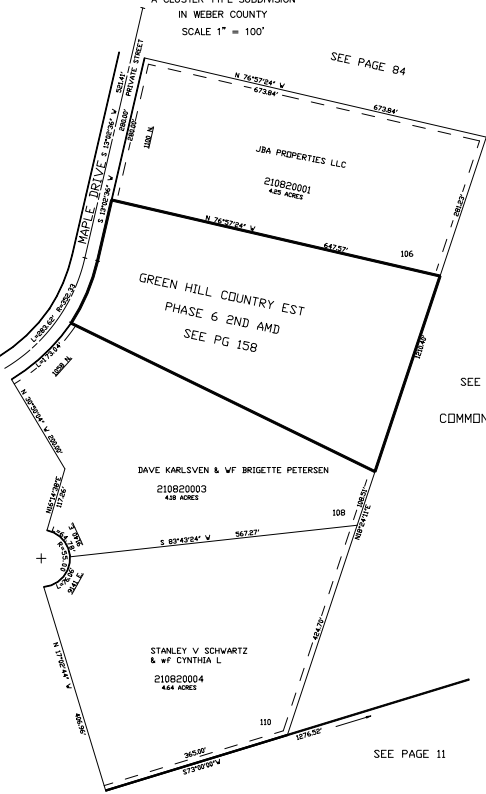
TAXING UNIT: 231

A CLUSTER TYPE SUBDIVISION
 IN WEBER COUNTY
 SCALE 1" = 100'

FOR NON-BUILDABLE AREAS:
 SEE AREAS, DRAINAGE EASEMENT
 AND EXISTING DRAINAGE DRALE.
 SEE DEDICATION PLAT.

SEE PAGE 81

SEE PAGE 84



SEE PAGE 79

COMMON AREA "K"

SEE PAGE 83

SEE PAGE 11

FOR COMPLETE DNG DATA AND
 DRAINAGE EASEMENT INFO, SEE
 ORIGINAL DEDICATION PLAT IN
 BOOK 48, PAGE 64-65 OF RECORDS.

10' UTILITY & DRAINAGE EASEMENTS EACH
 SIDE OF PROPERTY LINES AS INDICATED
 BY DASHED LINES EXCEPT AS OTHERWISE
 SHOWN.

VLG 12-98

